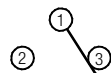


P.C.B. MOUNTING PLAN



SCHEMATIC

**TECHNICAL CHARACTERISTICS**

**SPECIFICATION**

- >Rating: 500mA, 12VDC
- >Contact Resistance: 30mOHM max.
- >Insulation Resistance: >10,000MOHM at 500VDC
- >Dielectric Strength: 500VAC for 1 minute
- >Travel: 1,6mm
- >Operating force: 800g max.
- >Life cycle: 2000 steps
- >Switch function: ON-ON

**MATERIAL**

- >Cover: PA66 UL 94V-0, color blue
- >Slide: PA66 UL 94V-0, color red
- >Contact: Gold Plated
- >Terminal: Gold Plated

**SOLDERING INFORMATION**

- >Terminal in THT version
- >Wave soldering at 260°C for 10 sec. max.

**ENVIRONMENTAL**

- >Storage condition: -40°C ~ +85°C
- >Operation condition: -40°C ~ +85°C
- >Compliance: ROHS, Reach

**PACKAGING INFORMATION**

- >Bulk

Scale - 2:1

This electronic component is designed and developed with the intention for use in general electronics equipments.

Before incorporating the components into any equipments in the field such as aerospace, aviation, nuclear control, submarine, transportation, (automotive control, train control, ship control), transportation signal, disaster prevention, medical, public information network etc. where higher safety and reliability are especially required or if there is possibility of direct damage or injury to human body, Würth Elektronik must be asked for a written approval.

In addition, even electronic component in general electronic equipments, when used in electrical circuits that require high safety, reliability functions or performance, the sufficient reliability evaluation-check for the safety must be performed before by the user before usage.

		Projection	GENERAL TOLERANCE .x = +/- 0,2 .xx = +/- 0,15		Basic material	
			Date	Name	DESCRIPTION	
			Drawn	12-02-02	WS-SUT	
			Checked		10mmx2,5mm right angle mini Slide Switch, THT version	
			Würth Elektronik eiCan		Scale	2:1
					Position	
					Drawing.- No.	450302014072
REV	FILE	DATE	BY	EDV NO	450302014072.dft	SIZE A4
						System Solid Edge V20