

1

2

3

4

SCALA NON IMPEGNATIVA
(DO NOT SCALE)
DIMENSIONI IN mm
(DIMENSIONS IN mm)

METRIC

PROIEZIONE EUROPEA
(EUROPEAN PROJECTION)



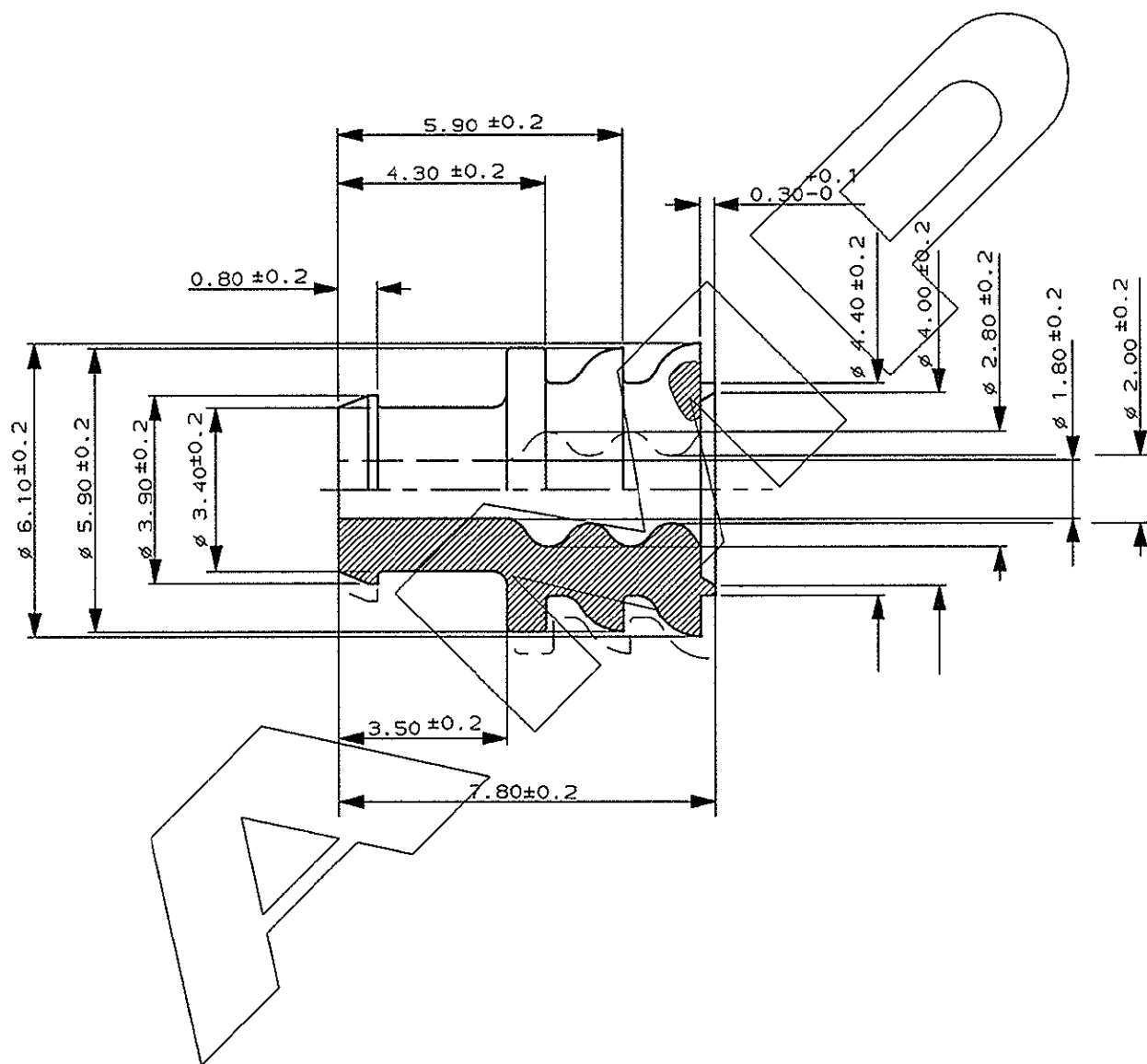
A


B

C

D

E



ROSSO-RED	GOMMA AL SILICONE SILICONE RUBBER	281934-3			
FINITURA / COLORE (FINISH / COLOUR)	MATERIALE (MATERIAL)	NUMERO (PART NUMBER)			
CUSTOMER DWG. FOR REFERENCE ONLY		DISEGNO PER CLIENTE SOLO PER RIFERIMENTO			
THIS DRAWING IS UNPUBLISHED		RELEASE FOR PUBLICATION 19			
© COPYRIGHT 1987 BY AMP INCORPORATED, HARRISBURG, PA. ALL INTERNATIONAL RIGHT RESERVED. AMP PRODUCTS MAY BE COVERED BY U.S. AND FOREIGN PATENT AND/OR PATENT PENDING					
TOLLERANZE: SE NON DIVERSAMENTE SPECIFICATO (TOLERANCES: UNLESS OTHERWISE SPECIFIED)	DIAM. ISOLANTE (INS. DIA. RANGE) 2.5-3.3mm	RANGO FILO (WIRE RANGE)			
± 0.3		SCALA (SCALE) -			
		AMP ITALIA S.p.A. Corso F.lli Cervi, 15 COLLEGNO (TORINO)			
H REVISED PER ET00-0024-04 M.G. 22 APR 2004	ANGOLI (ANGLES) ± 2°	DESCRIZIONE (DESCRIPTION) WIRE SEAL			
C1 UPDATED ET00-0193-98 R.R. 03 JUL 1988	DIS. (DR.) C. BERTINI 10-89				
C UPDATED C.B. TO 92	CONT. (CHK) A. BRUNI 10-89				
B INS. DIA 2.6 WAS 2.8 A.B. 15-5 92	APP. (APP.)				
A UPDATED A.B. NOV. 91					
REV. (REV.)	REVISIONI (REVISION RECORD)	DIS. DATA (DR) (DATE)	LOC. SIZE NUMERO (DWG NO) I A4 C-281934	REV. H	FOGLIO (SHEET) 1 DI (OF) 3

DISTRIBUZIONE (PRINT DIST.)

1

2

3

4

1

2

3

4

SCALA NON IMPEGNATIVA
(DO NOT SCALE)
DIMENSIONI IN mm
(DIMENSIONS IN)

METRIC


PROIEZIONE EUROPEA
(EUROPEAN PROJECTION)

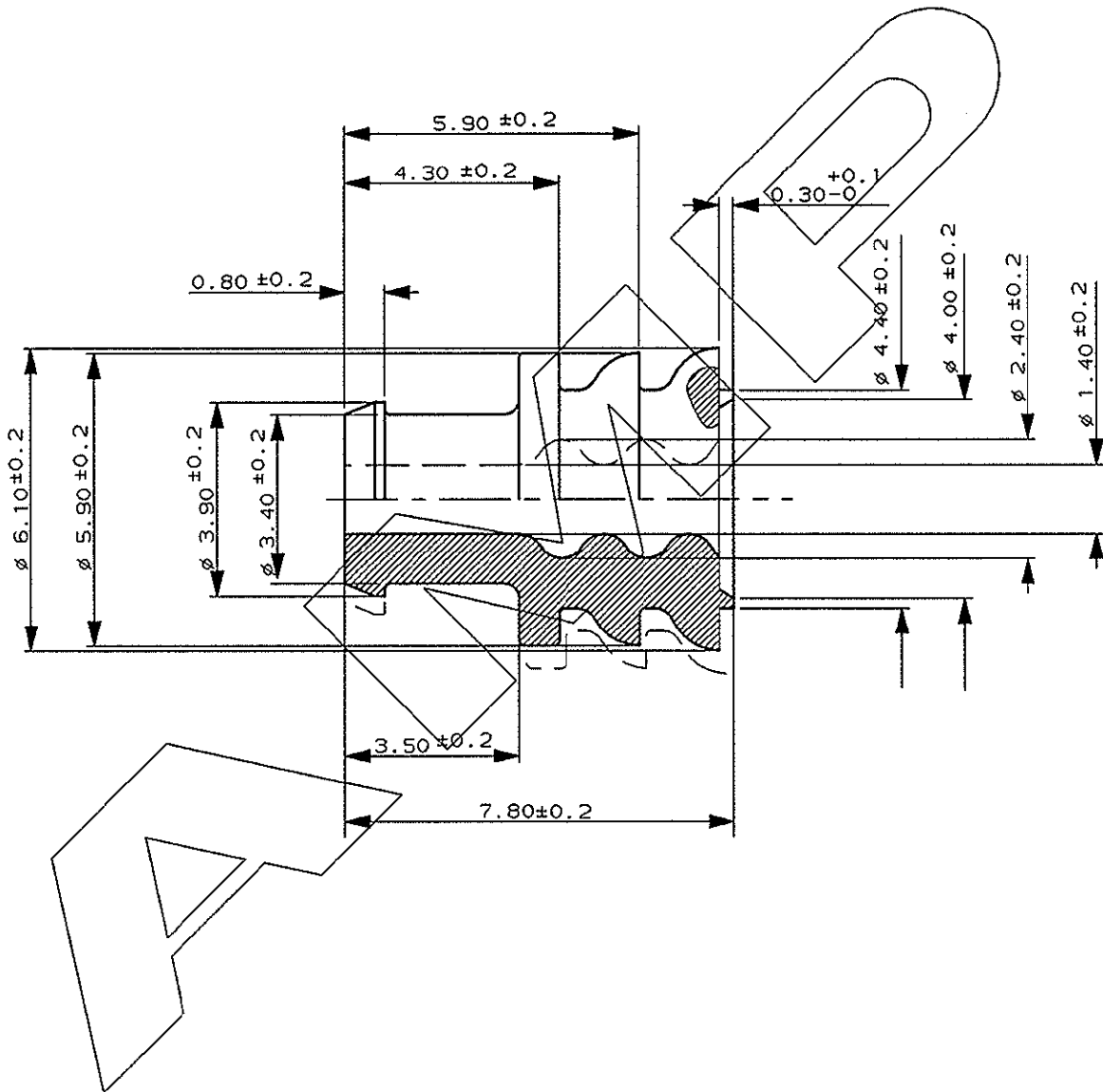
A

B

C

D

E



GIALLO-YELLOW	GOMMA AL SILICONE SILICONE RUBBER	281934-2
FINITURA / COLORE (FINISH / COLOUR)	MATERIALE (MATERIAL)	NUMERO (PART NUMBER)

CUSTOMER DWG. FOR REFERENCE ONLY	DISEGNO PER CLIENTE SOLO PER RIFERIMENTO
-------------------------------------	---

THIS DRAWING IS UNPUBLISHED | RELEASE FOR PUBLICATION 19
 © COPYRIGHT 1987 BY AMP INCORPORATED, HARRISBURG, PA. ALL INTERNATIONAL RIGHT RESERVED. AMP PRODUCTS MAY BE COVERED BY U.S. AND FOREIGN PATENT AND/OR PATENT PENDING

TOLLERANZE: SE NON DIVERSAMENTE SPECIFICATO (TOLERANCES: UNLESS OTHERWISE SPECIFIED)	DIAM. ISOLANTE (INS. DIA. RANGE) 1.7-2.4mm	RANGO FILO (WIRE RANGE)	SCALA (SCALE) -
---	--	----------------------------	-----------------------

ANGOLI (ANGLES) ± 0.3 ± 2°	tyco Electronics	AMP ITALIA S.p.A. Corso F.LLI Corvi, 15 COLLEGNO (TORINO)
-------------------------------------	-----------------------------------	---

DIS. - (DR.) -	DESCRIZIONE (DESCRIPTION) WIRE SEAL
CONT. - (CHK) -	

APP. - (APP.) -	LOC. SIZE NUMERO (DWG NO) I A4 C-281934	REV. H	FOGLIO (SHEET) 2 DI 3
--------------------	---	--------	-----------------------------

SEE SHEET 1 OF 3

DISTRIBUZIONE
(PRINT DIST.)

1

2

3

4

1

2

3

4

SCALA NON IMPEGNATIVA
(DO NOT SCALE)
DIMENSIONI IN
(DIMENSIONS IN) mm

METRIC

PROIEZIONE EUROPEA
(EUROPEAN PROJECTION)

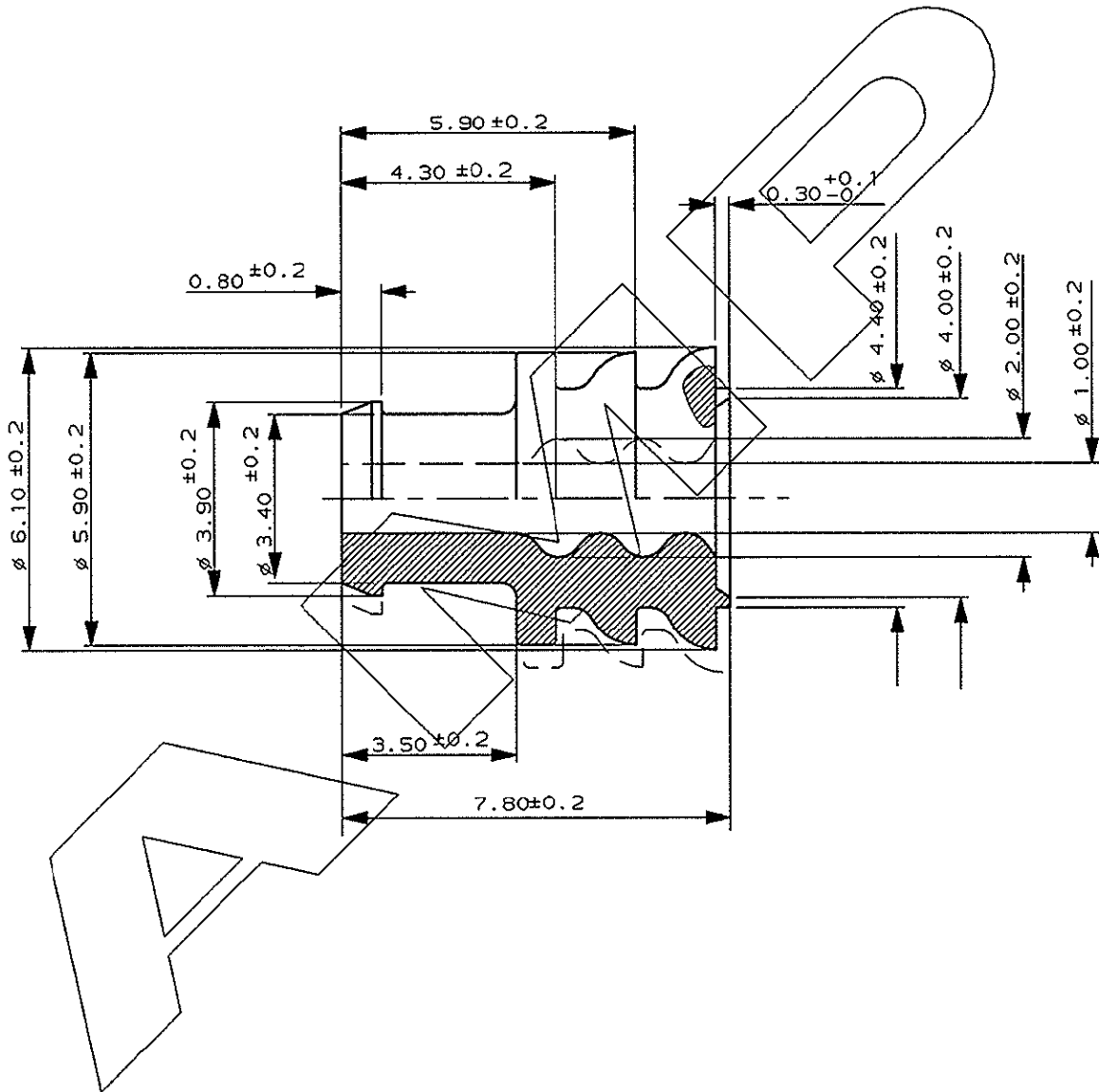
A

B

C

D

E



A

B

C

D

E

VERDE-GREEN	GOMMA AL SILICONE SILICONE RUBBER	281934-4
FINITURA / COLORE (FINISH / COLOUR)	MATERIALE (MATERIAL)	NUMERO (PART NUMBER)

CUSTOMER DWG. FOR REFERENCE ONLY	DISEGNO PER CLIENTE SOLO PER RIFERIMENTO
-------------------------------------	---

THIS DRAWING IS UNPUBLISHED RELEASE FOR PUBLICATION 19

© COPYRIGHT 1987 BY AMP INCORPORATED, HARRISBURG, PA. ALL INTERNATIONAL RIGHT RESERVED. AMP PRODUCTS MAY BE COVERED BY U.S. AND FOREIGN PATENT AND/OR PATENT PENDING

TOLLERANZE; SE NON DIVERSAMENTE SPECIFICATO (TOLERANCES; UNLESS OTHERWISE SPECIFIED)	DIAM. ISOLANTE (INS. DIA. RANGE)	RANGO FILO (WIRE RANGE)	SCALA (SCALE)
± 0.3	1.2-1.6mm		-

ANGOLI (ANGLES)	tyco Electronics	AMP ITALIA S.p.A. Corso F.lli Cervi, 15 COLLEGNO (TORINO)
± 2°		

DIS. (DR.)	DESCRIZIONE (DESCRIPTION)
-	WIRE SEAL

CONT. (CHK)	LOC. SIZE	NUMERO (DWG NO)	REV.	FOGLIO (SHEET)
-	I A4	C-281934	H	3 DI 3

APP. (APP.)	REV.	FOGLIO (SHEET)
-	H	3 DI 3

DISTRIBUZIONE
(PRINT DIST.)

SEE SHEET 1 OF 3

1

2

3

4