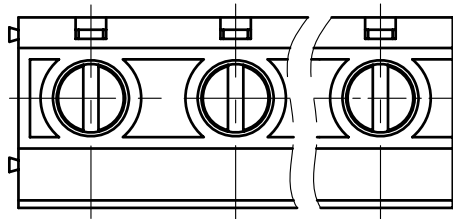


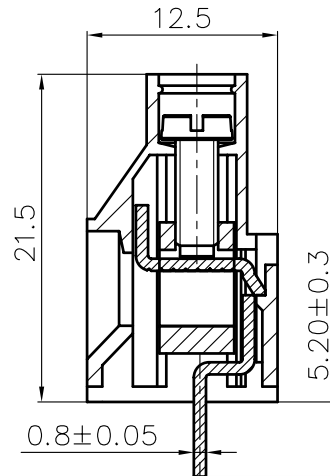
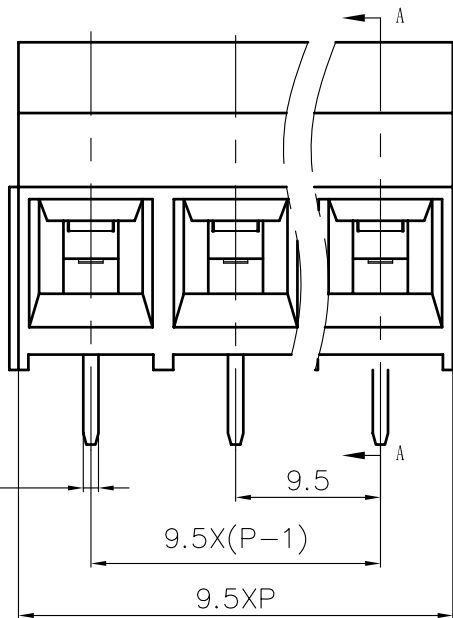
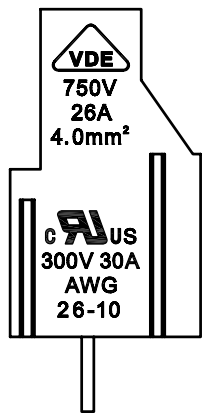
REVISION RECORD				
REV	ECN	DESCRIPTION	DRFT	DATE

NOTES:

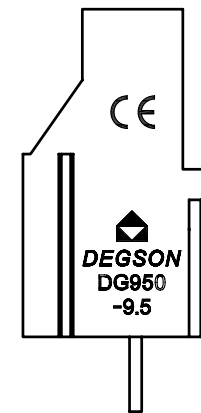
- 1.DIMENSION SHALL BE INTERPRETED PER ASME Y14.5-2009.
- 2.PITCH: 9.5MM
- 3.RATED VOLATGE/CURRENT: UL 300V/30A
VDE 750V/26A
- 4.INSULATION RESISTANCE: 5000MΩ/DC1000V
- 5.WITH STANDING VOLTAGE: AC2000V/1MIN
- 6.WIRE RANGE: 22-10AWG 4MM²
- 7.TEMP. RANGE: -40°C~+105°C
- 8.TORQUE: 5.10KGF.CM
- 9.UNDIMENSIONED TOLERANCES:



Pitch range in mm		Nominal dimension range in mm						
to 6	over 6 to 10	over 10 to 24	to 30	over 30 to 60	over 60 to 100	over 100 to 150	over 150	∩ ∇
±0.10	±0.15	±0.25	±0.2	±0.3	±0.5	±0.7	±1.0	0.05/10



Section A-A



ITEM	NAME OF PART	NO. OF PART	Q"TY	MATERIAL	NOTES
4	DG950-Pin header	4031B00010(H)	XX	Brass	SnCe
3	DG950 "—"Screws	S000007600(H)	XX	Steel	Cr ³ +Zn
2	DG950-Contact	X000000310(H)	XX	Brass	Ni plated
1	DG950-9.5-Housing	4031A0YXXA(H)	1	PA66	UL94V-0

MM (INCH)		MATERIAL:			
TOLERANCES EXCEPT AS NOTED		FINISH:			
.X ±	.X' ±	PART NO.:		TITLE: ASSEMBLY DRAWING	
.XX ±	.XX' ±	APPD:		DRAWING NO.: DG950-9.5-E01	
.XXX ±	.XXX' ±	CHKD:		DO NOT SCALE DRAWING	
ANGLES ± 1°		DRFT: LIN 05/12/07"		SCALE: N/A	SHEET: 1/1
THIRD ANGLE PROJECTION				REV: T3	