

## Flachsteckhülsen

DIN 46346, Form A+B

## Clips femelles plats

DIN 46346, form A+B

## Flat receptacles

DIN 46346, form A+B

# 6,3 mm

Werkstoff:  
MS = Messing

Strombelastbarkeit:  
0.5 - 1.0 mm<sup>2</sup> / 10 A max.  
1.5 - 2.5 mm<sup>2</sup> / 15 A max.

Oberflächenbehandlung: Code  
bl = blank (0)  
ag = versilbert (1)  
au = vergoldet (2)  
ni = vernickelt (5)  
sn = reinverzinkt (7)

Bestellbeispiel:  
Exemple de commande:  
Example of order:

38371A.67  
(38371A MS sn)

Matière:  
MS = laiton

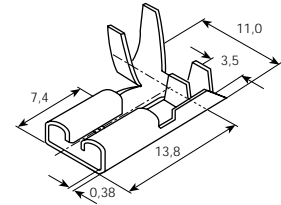
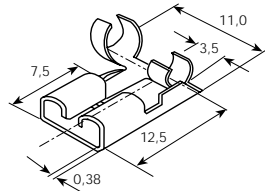
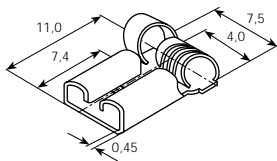
Intensité admissible:  
0.5 - 1.0 mm<sup>2</sup> / 10 A max.  
1.5 - 2.5 mm<sup>2</sup> / 15 A max.

Traitements de surface: Code  
bl = brut (0)  
ag = argenté (1)  
au = doré (2)  
ni = nickelé (5)  
sn = étamage pur (7)

Material:  
MS = brass

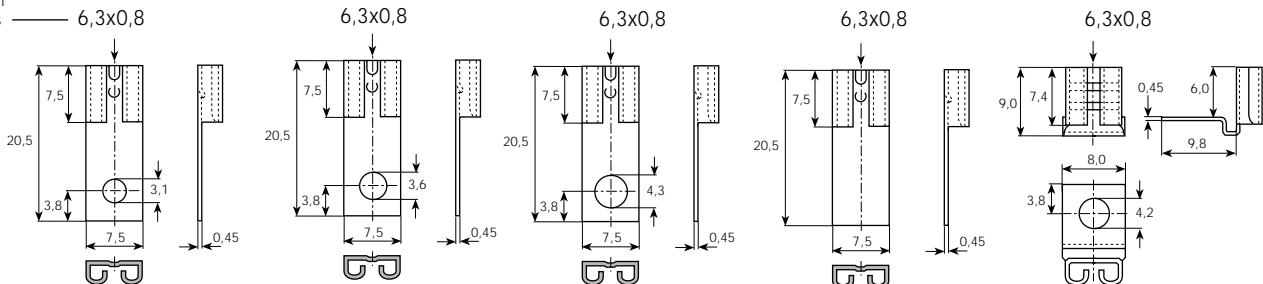
Current carrying capacity:  
0.5 - 1.0 mm<sup>2</sup> / 10 A max.  
1.5 - 2.5 mm<sup>2</sup> / 15 A max.

Surface-plating: Code  
bl = clean (0)  
ag = silver-plated (1)  
au = gold-plated (2)  
ni = nickel plated (5)  
sn = pure tin-plated (7)



Artikel-Nr. Numéro d'article Part-No.	DIN 46346, Form B gerollt / roulé / rolled 0.5-1.5 mm <sup>2</sup> 38371A.6( ) MS	DIN 46346, Form A gerollt / roulé / rolled 0.5-1 mm <sup>2</sup> 38372C.6( ) MS	DIN 46346, Form A 1.5-2.5 mm <sup>2</sup> 38373C.6( ) MS
Stand.-Packg.	6.3x0.8 500	6.3x0.8 500	6.3x0.8 500
Werkzeuge Outils / Tools	3983AN / 3984K	3983BN / 3984M	3983CN / 3984N

für Steckungen  
pour languettes  
for tabs



Artikel-Nr.  
Numéro d'article  
Part-No.

Stand.-Packg.

3839L.6( ) MS

6.3x0.8  
500

3839M.6( ) MS

6.3x0.8  
500

3839N.6( ) MS

6.3x0.8  
500

3839T.6( ) MS

6.3x0.8  
500

3839W.6( ) MS

6.3x0.8  
500